

# Child Welfare Court Data Metrics

**KEY INDICATORS 2021  
NEW YORK STATE**



**CHILD WELFARE COURT IMPROVEMENT PROJECT**  
NEW YORK STATE UNIFIED COURT SYSTEM | OFFICE *for* JUSTICE INITIATIVES

## Index of Metrics

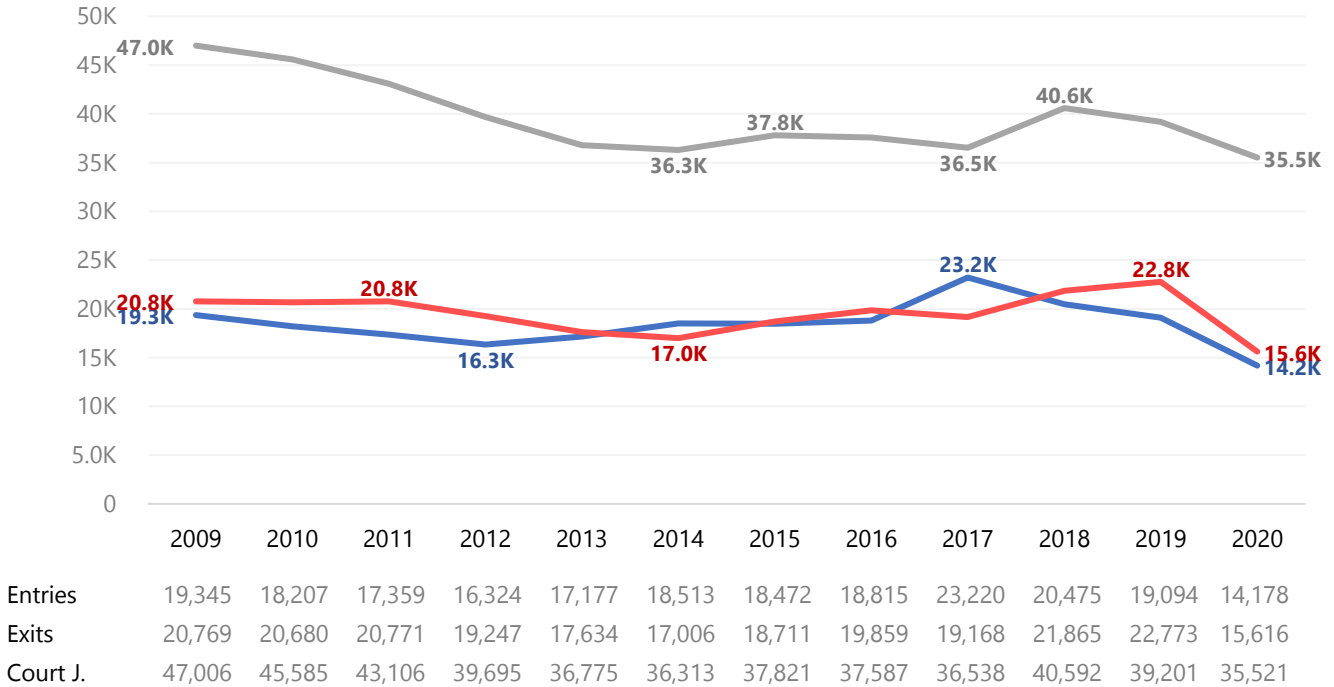
<b>Overview</b>	<b>p. 1</b>
Children Under Court Jurisdiction	
<b>Time from Entry into Out-of-Home Care to Permanency Achieved</b>	<b>pp. 2-5</b>
Time from Entry into Out-of-Home Care to Permanency	p. 2
Time from Entry into Out-of-Home Care to Adoption	p. 3
Permanency by Age, at 24 months	p. 4
Time from Entry into Out-of-Home Care to Exit, by Exit Type, 2015 Entry Cohort	p. 5
<b>Time from Petition Filing to Issue Joined</b>	<b>p. 6</b>
Abuse/Neglect	
Termination of Parental Rights	
<b>Time from Petition Filing to Adjudication</b>	<b>pp. 7-8</b>
Abuse/Neglect	p. 7
Termination of Parental Rights	p. 8
<b>Time from Petition Filing to Disposition</b>	<b>pp. 9-10</b>
Abuse/Neglect	p. 9
Termination of Parental Rights	p. 10
<b>Time from Entry into Out-of-Home Care to Termination of Parental Rights Petition Filing</b>	<b>p. 11</b>
<b>Time from Entry into Out-of-Home Care to Child Freed</b>	<b>p. 12</b>
<b>Time to Initial Permanency Hearing and Between Subsequent Permanency Hearings</b>	<b>p. 13</b>
Non-Freed Children	
Freed Children	
<b>Subsequent Abuse/Neglect Filings after the Initial Period of Court Jurisdiction Ends</b>	<b>p. 14</b>

## Overview

Number of children **Under Court Jurisdiction** on the 1st day of the year

Number of children **Entering Court Jurisdiction** & **Exiting Court Jurisdiction** during the year

By calendar year, 2009-2020 | New York State



Note: Counts include only children entering, exiting, or under court jurisdiction for the first time (i.e., first petition) due to an abuse, neglect, or voluntary placement.

## Time from Entry into Out-of-Home Care to Permanency

Percent of children achieving permanency in **6**, **12**, **24**, and **36** months from entering out-of-home care, by type of permanency

By entry year cohorts, 2016-2019 | New York State



### Number of children in each cohort

2016	2017	2018	2019
8,943	9,697	8,958	8,458

Among children who enter out-of-home (OOH) care for the first time in a given period due to abuse, neglect, or voluntary placement, the time from entering OOH care to permanency. Permanency includes reunification, adoption, or permanent custody or guardianship with a fit and willing relative or suitable person.

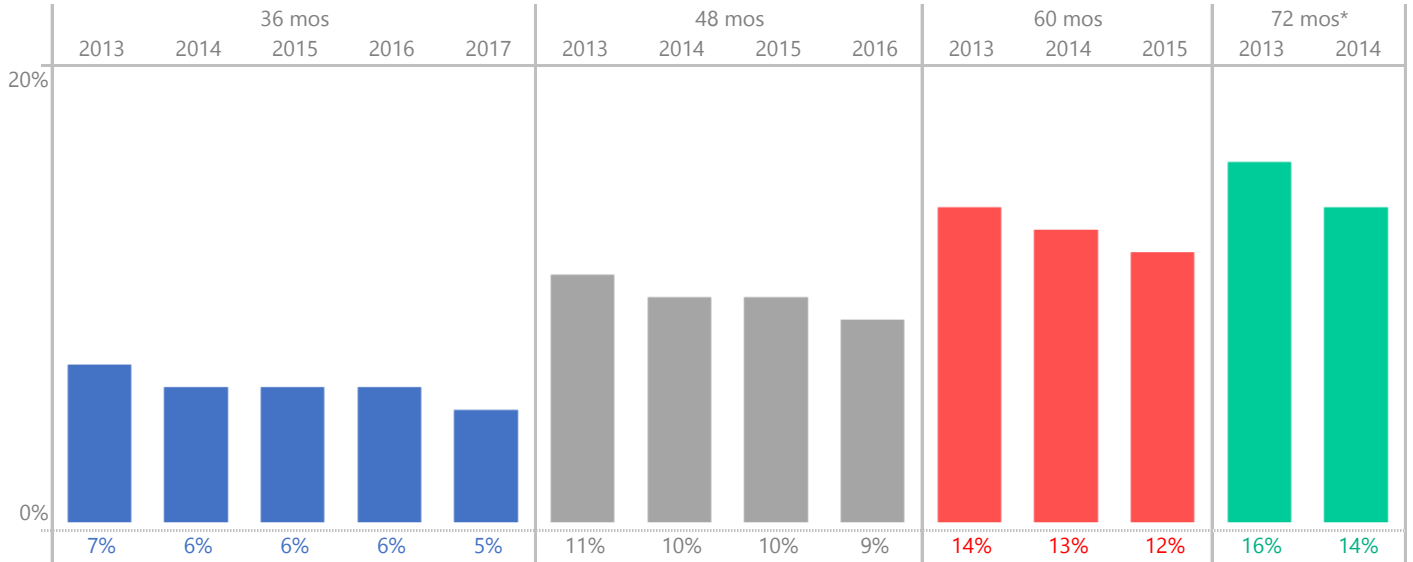
If a cohort is not shown for a given period of time, it is because not enough time has passed (as of this analysis) to observe all of the children in the cohort for that amount of time.

\*Most adoptions occur several years after entering care. See p. 3 for more information.

## Time from Entry into Out-of-Home Care to Adoption

Percent of children achieving permanency through adoption in **36**, **48**, **60**, and **72** months from entering out-of-home care, by type of permanency

By entry year cohorts, 2013-2017 | New York State



### Number of children in each cohort

2013	2014	2015	2016	2017
8,520	8,946	8,940	8,943	9,697

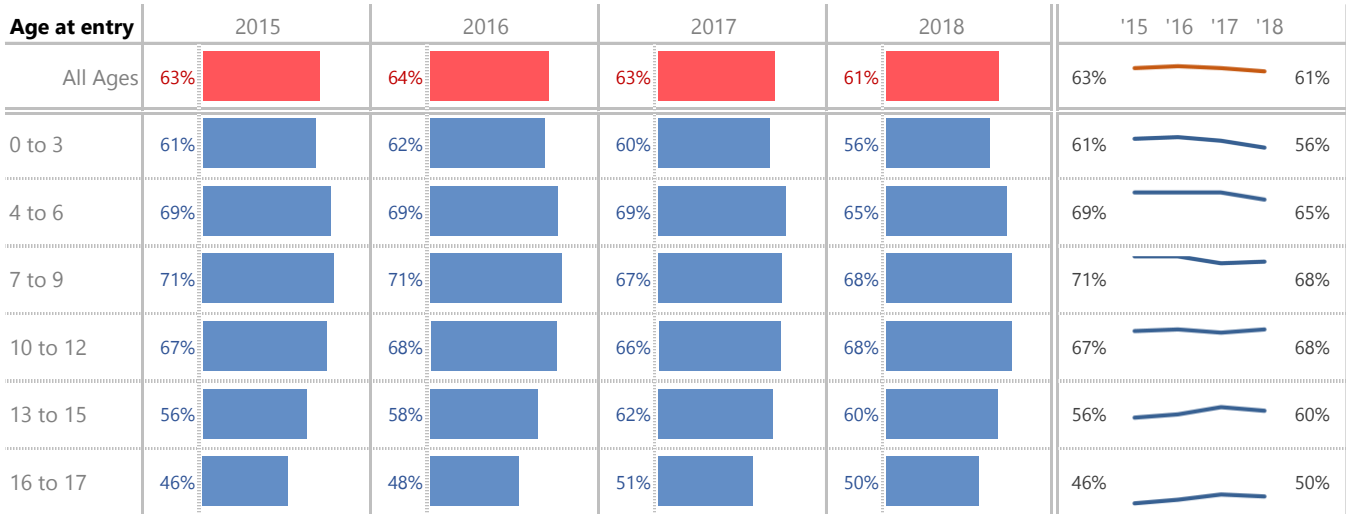
Among children who enter out-of-home (OOH) care for the first time in a given period due to abuse, neglect, or voluntary placement, the time from entering OOH care to adoption.

If a cohort is not shown for a given period of time, it is because not enough time has passed (as of this analysis) to observe all of the children in the cohort for that amount of time.

\*After 72 mos (6 yrs) adoption rates start to level off.

## Percent of Children Achieving Permanency at 24 months from Entering Out-of-Home care, by Age at Entry

By entry year cohorts, 2015-2018 | New York State



Reading the bar and line charts:

1. Look down a column to see how age groups differ within a given cohort year.
2. Look across a row, or look at the line chart, to see how a given age group has changed over time

### Number of children in each cohort

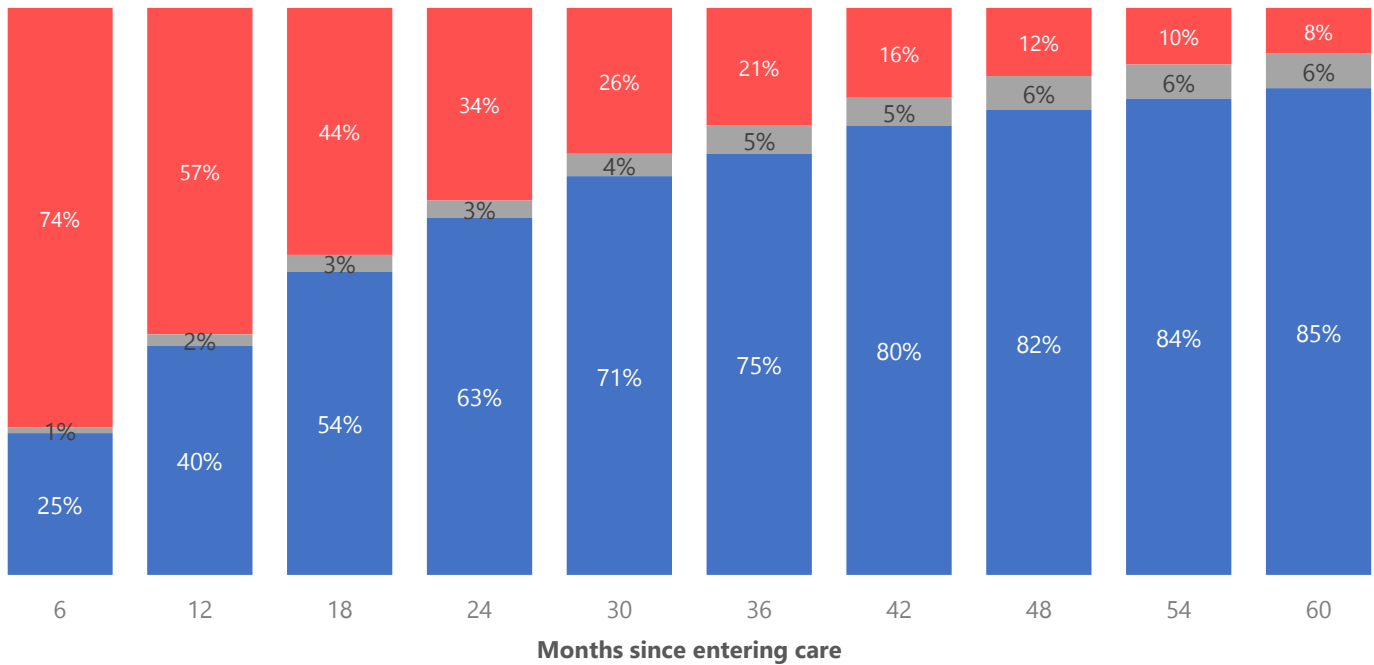
	2015	2016	2017	2018
All Ages	8940	8943	9697	8958
0 to 3	3842	3837	4085	3920
4 to 6	1435	1456	1533	1327
7 to 9	1104	1214	1304	1177
10 to 12	920	910	1068	1004
13 to 15	1103	1034	1105	1026
16 to 17	536	492	602	504

## Time from Entry into Out-of-Home Care to Exit, by Exit Type

Percent of children still in care and exiting, by exit type, at 6 month intervals from date of entering out-of-home care

2015 Entry Cohort\* | New York State

- Still in Out-Of-Home Care
- Aged Out & Other Exit\*\*
- Reunification, Custody, Guardianship, and Adoption



\*N = 8940. The cohort shown was chosen because enough time has passed to fully observe all children in that cohort for at least 60 months.

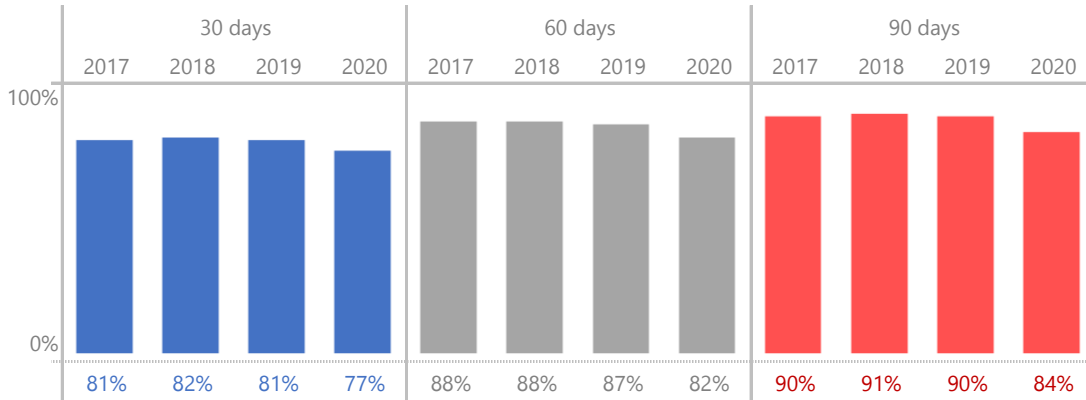
\*\* "Other Exit" could include transfer to another agency, runaway, or death of child.

	Months since entering care									
	6	12	18	24	30	36	42	48	54	60
Still in Out-of-Home Care	74%	57%	44%	34%	26%	21%	16%	12%	10%	8%
Reunification	21%	32%	39%	43%	46%	48%	49%	49%	50%	50%
Custody	4%	8%	13%	16%	18%	18%	19%	19%	19%	19%
Adoption	0%	0%	1%	2%	4%	6%	8%	10%	11%	12%
Guardianship	0%	0%	1%	2%	3%	3%	4%	4%	4%	4%
Aged Out	0%	0%	1%	1%	1%	2%	2%	3%	3%	3%
Other Exit	1%	2%	2%	2%	3%	3%	3%	3%	3%	3%

### Time from **Abuse/Neglect** Petition Filing to Issue Joined

Percent of children whose petition has reached issue joined within **30**, **60**, and **90** days from petition filing date

By entry year cohorts, 2017-2020 | New York State



#### Number of children in each cohort

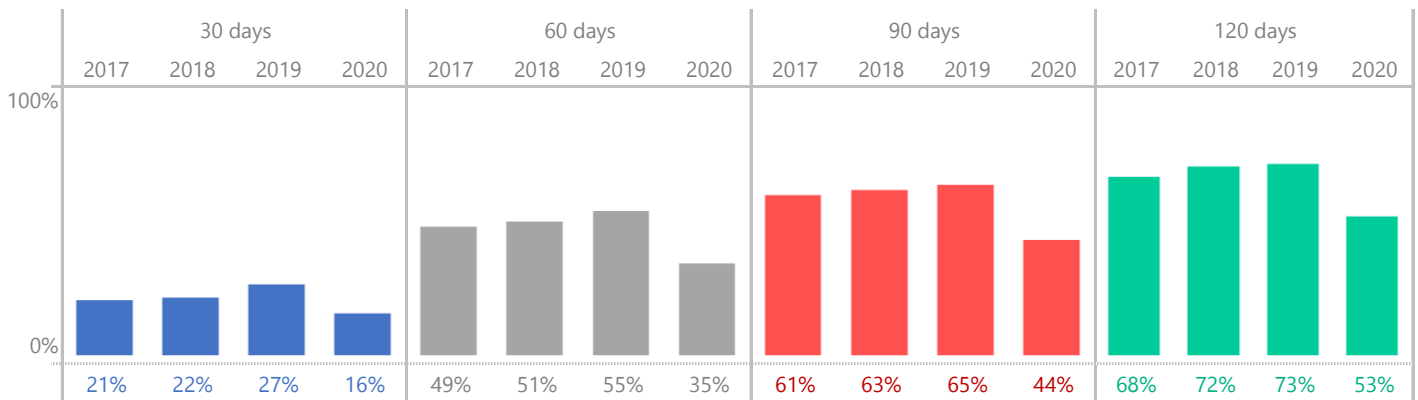
2017	2018	2019	2020
22,932	20,194	18,844	13,985

Among children for whom an original NA/NN petition is filed during a given period, the time from petition filing to issue is joined.

### Time from **Termination of Parental Rights (TPR)** Petition Filing to Issue Joined

Percent of children whose petition has reached issue joined within **30**, **60**, **90**, and **120** days from petition filing date

By entry year cohorts, 2017-2020 | New York State



#### Number of children in each cohort

2017	2018	2019	2020
1,915	1,893	1,677	1,220

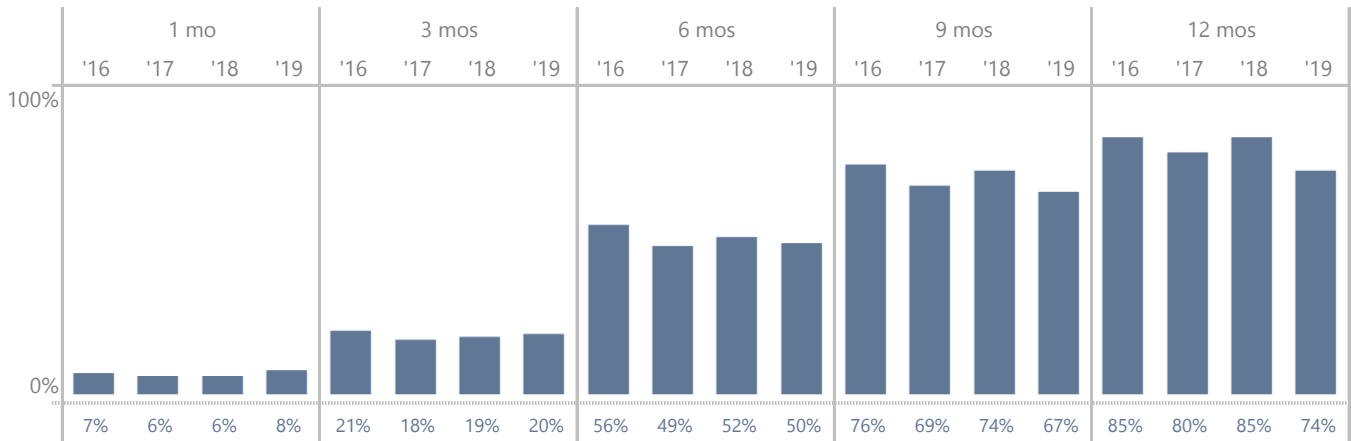
Among children for whom an initial TPR petition is filed during a given period, the time from petition filing to issue joined.



## Time from Abuse/Neglect Petition Filing to Adjudication

Percent of children whose petition has been adjudicated, by months from filing to adjudication

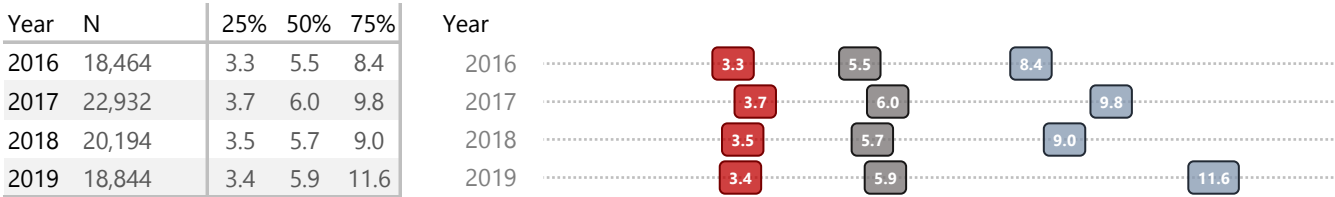
By entry year cohorts, 2016-2019 | New York State



## Time from Filing to Adjudication, by Month

Year	N	Months												
		0	1	2	3	4	5	6	7	8	9	10	11	12
2016	18,464	1%	7%	13%	21%	32%	43%	56%	65%	71%	76%	79%	82%	100%
2017	22,932	1%	6%	11%	18%	27%	37%	49%	57%	64%	69%	74%	77%	80%
2018	20,194	1%	6%	12%	19%	30%	40%	52%	60%	68%	74%	78%	82%	85%
2019	18,844	1%	8%	12%	20%	30%	40%	50%	57%	62%	67%	70%	72%	74%

## Number of months it takes for 25%, 50%, and 75% of Petitions to reach adjudication

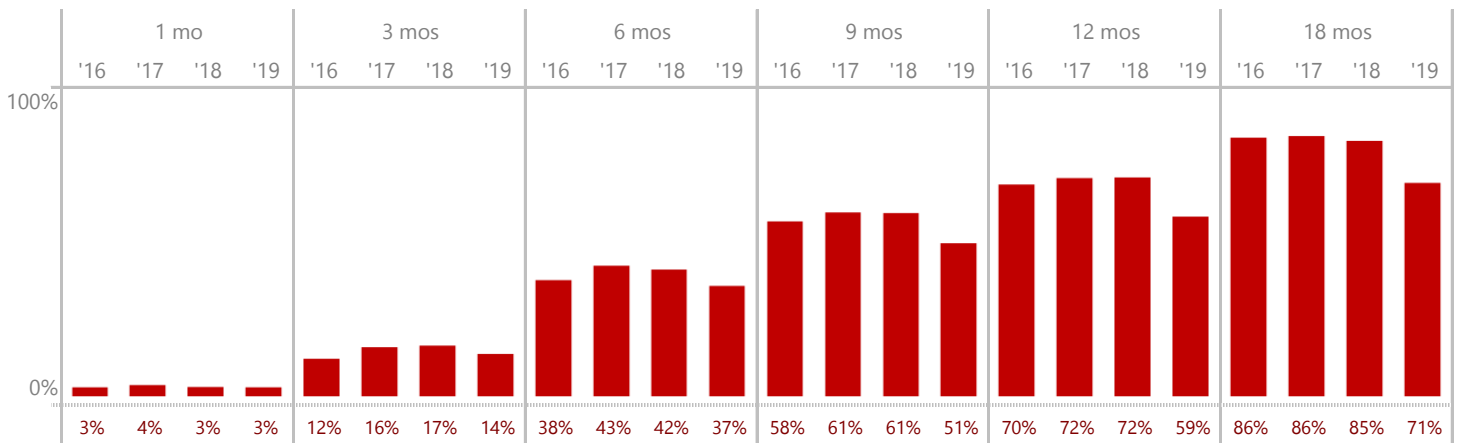


Among children for whom an original NA/NN petition is filed during a given period, the time from petition filing to adjudication

## Time from Termination of Parental Rights (TPR) Petition Filing to Adjudication

Percent of children whose TPR petition has been adjudicated, by months from filing to adjudication

By TPR filing cohorts, 2016-2019 | New York State



## Time from TPR Filing to Adjudication, by Month

Year	N	Months																		
		0	1	2	3	4	5	6	7	8	9	10	11	12	13	14	15	16	17	18
2016	1,934	0%	3%	7%	12%	21%	29%	38%	46%	52%	58%	63%	66%	70%	74%	77%	80%	83%	84%	86%
2017	1,915	0%	4%	9%	16%	24%	34%	43%	50%	57%	61%	66%	69%	72%	74%	78%	81%	83%	85%	86%
2018	1,893	0%	3%	9%	17%	27%	33%	42%	49%	55%	61%	65%	70%	72%	75%	78%	81%	82%	84%	85%
2019	1,677	0%	3%	7%	14%	23%	30%	37%	42%	46%	51%	54%	56%	59%	62%	64%	66%	67%	69%	71%

## Number of months it takes for 25%, 50%, and 75% of TPR Petitions to reach adjudication

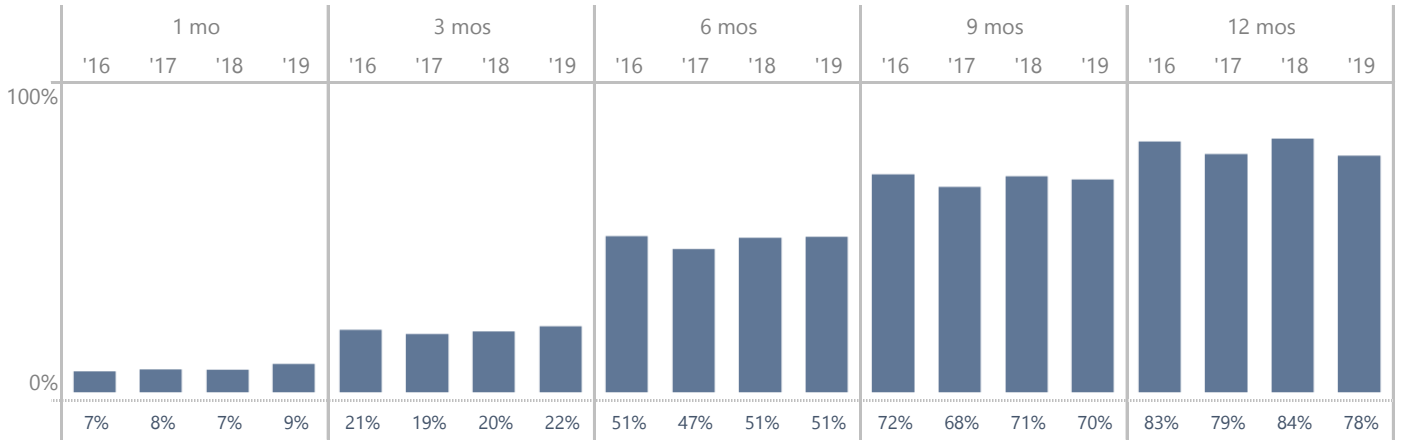


Among children for whom an original TPR petition is filed during a given period, the time from petition filing to adjudication

### Time from Abuse/Neglect Petition Filing to Disposition\*

Percent of children whose petition has been disposed, by months from filing to disposition

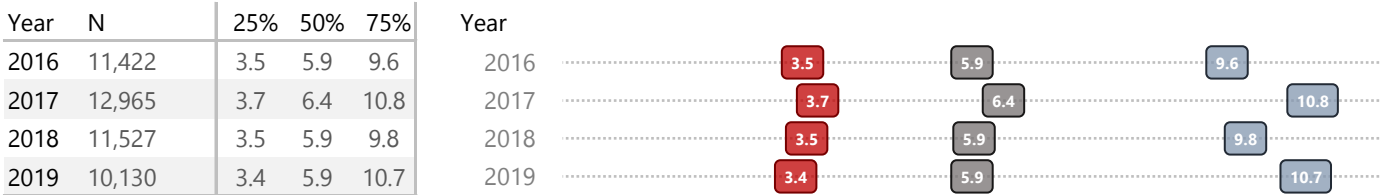
By entry year cohorts, 2016-2019 | New York State



### Time from Filing to Adjudication, by Month

Year	N	Months												
		0	1	2	3	4	5	6	7	8	9	10	11	12
2016	11,422	1%	7%	13%	21%	30%	41%	51%	60%	67%	72%	77%	80%	83%
2017	12,965	1%	8%	12%	19%	28%	37%	47%	55%	63%	68%	72%	75%	79%
2018	11,527	1%	7%	13%	20%	30%	40%	51%	59%	66%	71%	76%	80%	84%
2019	10,130	2%	9%	14%	22%	31%	41%	51%	58%	65%	70%	73%	76%	78%

### Number of months it takes for 25%, 50%, and 75% of Petitions to reach adjudication



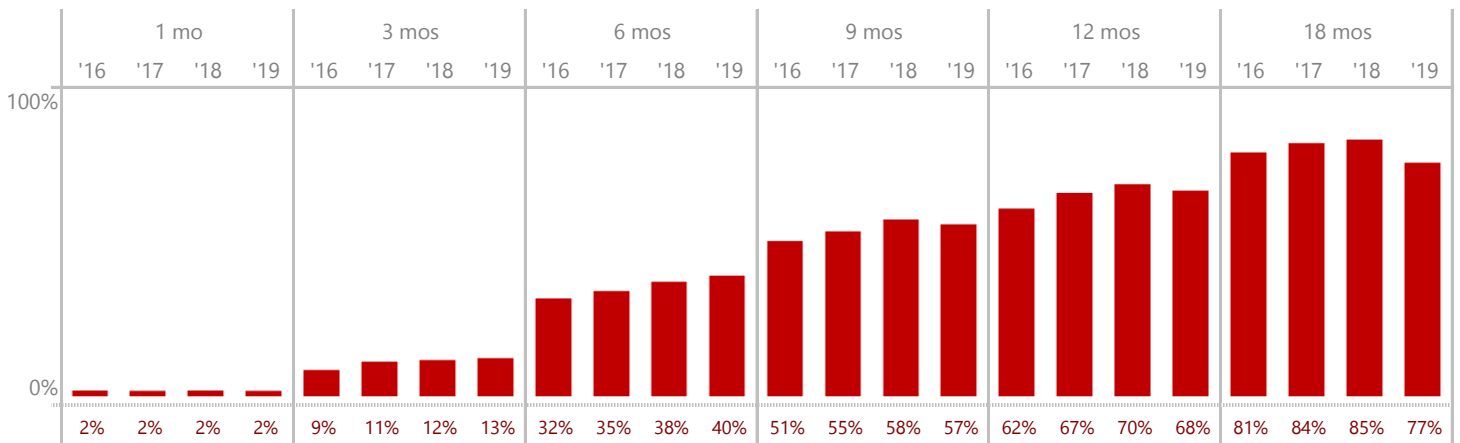
Among children for whom an original NA/NN petition is filed during a given period, the time from petition filing to disposition

**\*Note:** The population for time to TPR Disposition is determined by the prior metric, time to TPR Adjudication. As more cases get adjudicated, the population for time to disposition will increase. This changes the numbers, percents and quartile values in this time to disposition metric. This primarily impacts the more recent entry cohort years.

## Time from Termination of Parental Rights (TPR) Petition Filing to Disposition\*

Percent of children whose TPR petition has been disposed, by months from filing to disposition

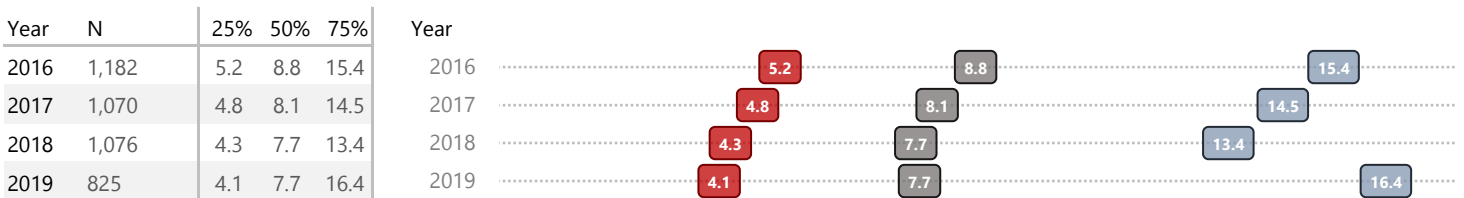
By TPR filing cohorts, 2016-2019 | New York State



### Time from TPR Filing to Disposition, by Month

Year	N	Months																		
		0	1	2	3	4	5	6	7	8	9	10	11	12	13	14	15	16	17	18
2016	1,182	0%	2%	4%	9%	16%	23%	32%	38%	45%	51%	56%	58%	62%	67%	71%	74%	77%	79%	81%
2017	1,070	0%	2%	6%	11%	18%	27%	35%	43%	49%	55%	60%	64%	67%	70%	74%	77%	80%	82%	84%
2018	1,076	0%	2%	5%	12%	23%	30%	38%	45%	52%	58%	63%	68%	70%	73%	77%	80%	82%	84%	85%
2019	825	0%	2%	5%	13%	25%	32%	40%	46%	51%	57%	62%	65%	68%	69%	71%	73%	75%	76%	77%

### Number of months it takes for 25%, 50%, and 75% of TPR Petitions to reach Disposition



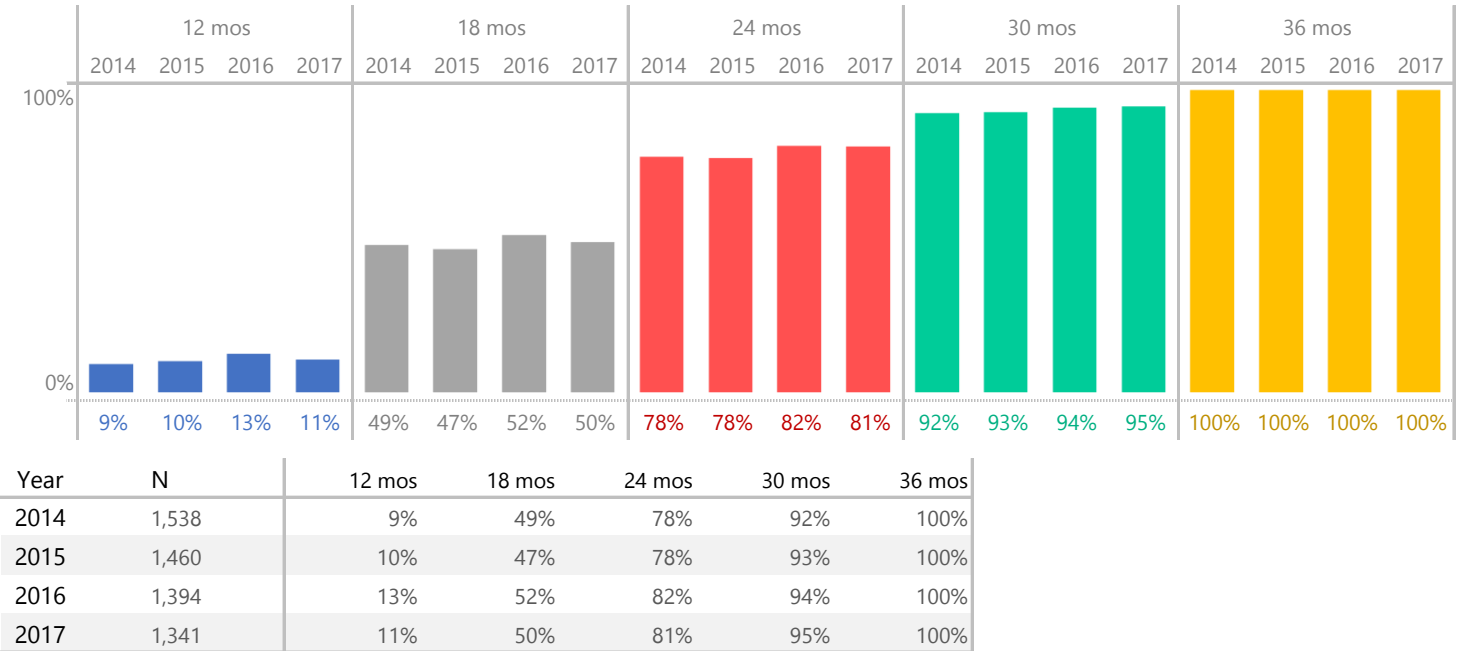
Among children for whom an original TPR petition is filed during a given period with a finding, the time from petition filing to disposition.

**\*Note:** The population for time to TPR Disposition is determined by the prior metric, time to TPR Adjudication. As more cases get adjudicated, the population for time to disposition will increase. This changes the numbers, percents and quartile values in this time to disposition metric. This primarily impacts the more recent entry cohort years.

### Time from Entry into Out-of-Home Care to Filing a Petition for Termination of Parental Rights (TPR)

Among all children for whom a TPR petition is filed within 36 months of entering out-of-home care, percent of children with a TPR petition filed, by time to filing

By entry year cohorts, 2014-2017 | New York State

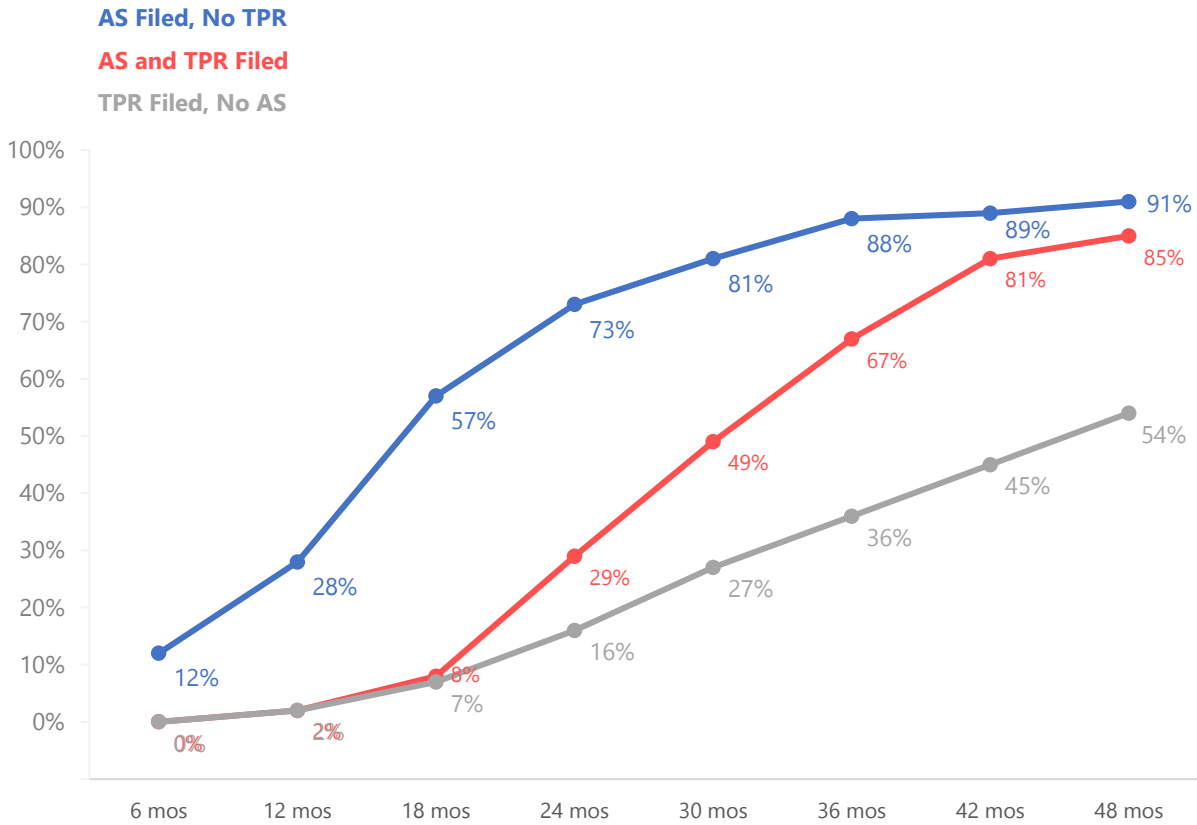


## Time from Entry into Out-of-Home Care to Child Freed

Percent of children freed\* after entering OOH care, by months since entering care and type of filing

(limited to children for whom an initial TPR and/or AS petition is filed within 36 months of entering)

2015 Entry Cohort | New York State



Filing Type	N	6 mos	12 mos	18 mos	24 mos	30 mos	36 mos	42 mos	48 mos
AS Filed, No TPR	209	12%	28%	57%	73%	81%	88%	89%	91%
AS and TPR Filed	611	0%	2%	8%	29%	49%	67%	81%	85%
TPR Filed, No AS	854	0%	2%	7%	16%	27%	36%	45%	54%

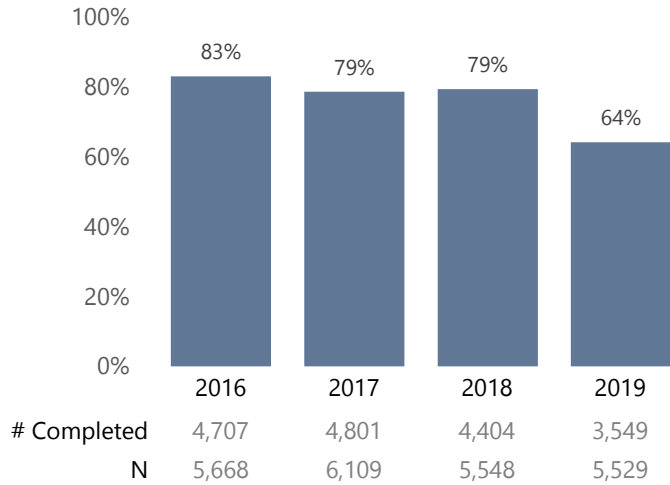
Among children who entered OOH care for the first time due to abuse, neglect, or voluntary placement and for whom an initial TPR and/or AS petition is filed within 36 months of entering, the time from entry to child freed.

\*A child is considered "freed" when he/she has had at least one disposition of a certain type on an AS and TPR docket and an outcome in UCMS indicates the child is freed. The freed date is the date of the last disposition on the AS or TPR docket

Among children who enter out-of home (OOH) care for the first time in a given period due to abuse/neglect or voluntary placement...

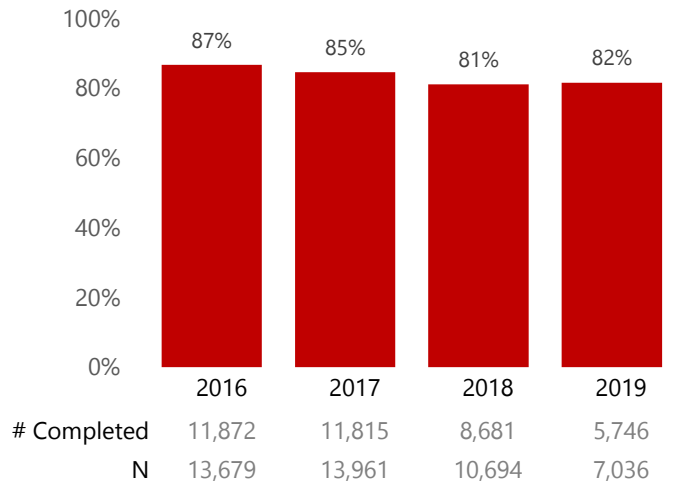
...% of initial permanency hearings completed within **9** months from entering OOH care

By entry year cohorts 2016-2019 | New York State



...% of permanency hearings completed within **7** months from the previous completed permanency hearing

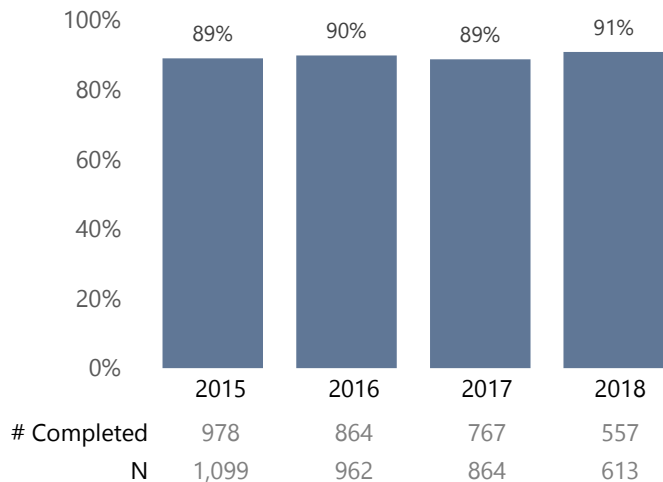
By entry year cohorts 2016-2019 | New York State



Among children who enter out-of home (OOH) care for the first time in a given period due to abuse/neglect or voluntary placement **and are subsequently freed...**

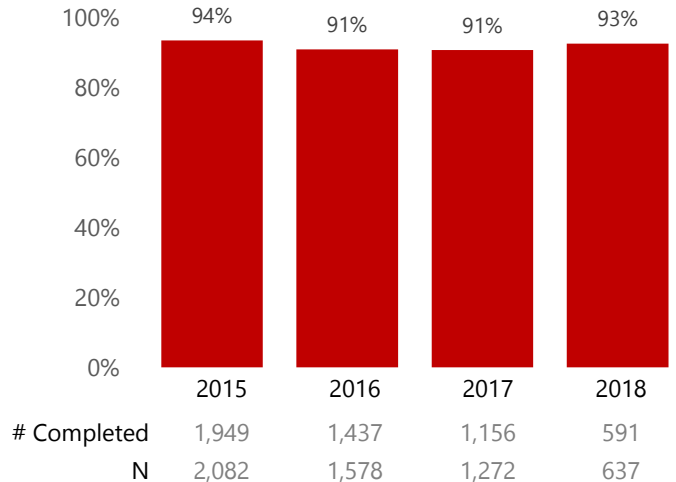
...% of initial permanency hearings completed within **60** days from the child freed date

By entry year cohorts 2015-2018 | New York State



...% of permanency hearings completed within **7** months from the previous completed permanency hearing

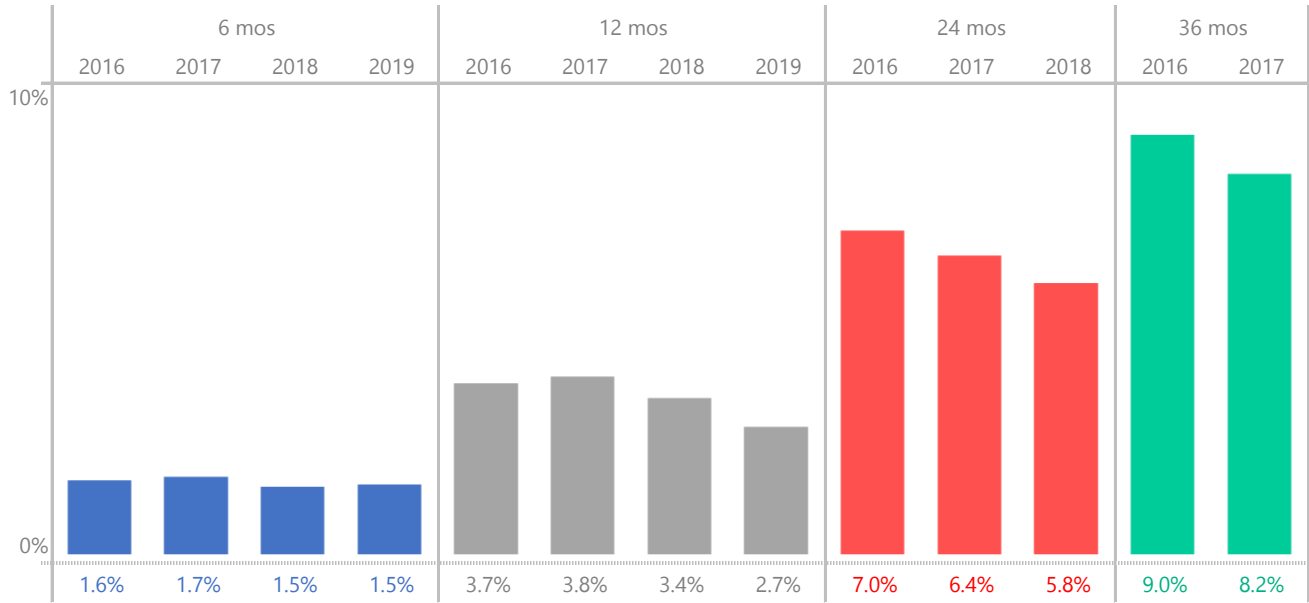
By entry year cohorts 2015-2018 | New York State



## Time from End of Court Jurisdiction to Subsequent Abuse/Neglect Filing

Percent of children with an abuse/neglect petition filed in **6**, **12**, **24**, and **36** months after court jurisdiction ends

By exit year cohorts, 2016-2019 | New York State



### Number of children in each cohort

2016	2017	2018	2019
18,433	18,037	21,029	21,882

Among children whose period of court jurisdiction ends, the percent of children who are the subject of a subsequent petition alleging abuse/neglect filed within a given period of time.

If a cohort is not shown for a given period of time, it is because not enough time has passed (as of this analysis) to observe all of the children in the cohort for that amount of time.