

Child Welfare Court Data Metrics

**KEY INDICATORS 2023
NEW YORK STATE**



CHILD WELFARE COURT IMPROVEMENT PROJECT
NEW YORK STATE UNIFIED COURT SYSTEM | OFFICE *for* JUSTICE INITIATIVES

Index of Metrics

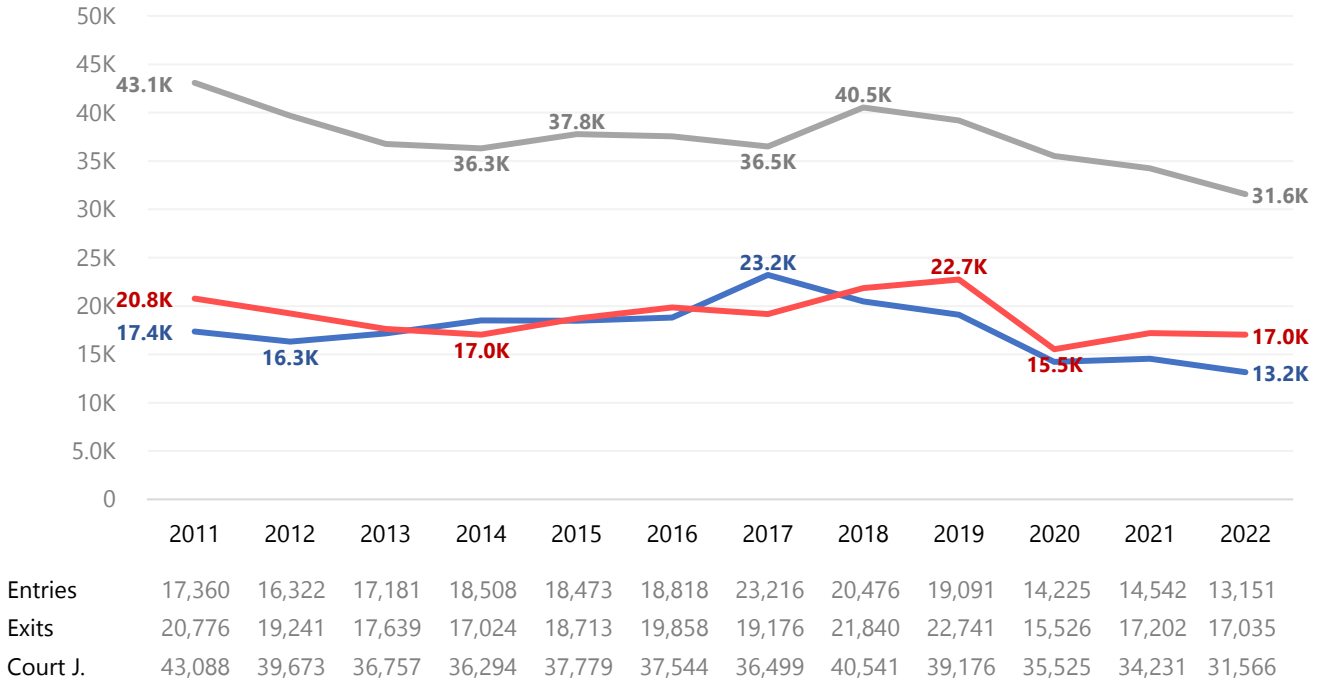
Overview	p. 1
Children Under Court Jurisdiction	
Time from Entry into Out-of-Home Care to Permanency Achieved	pp. 2-5
Time from Entry into Out-of-Home Care to Permanency	p. 2
Time from Entry into Out-of-Home Care to Adoption	p. 3
Permanency by Age, at 24 months	p. 4
Time from Entry into Out-of-Home Care to Exit, by Exit Type, 2017 Entry Cohort	p. 5
Time from Petition Filing to Issue Joined	p. 6
Abuse/Neglect	
Termination of Parental Rights	
Time from Petition Filing to Adjudication	pp. 7-8
Abuse/Neglect	p. 7
Termination of Parental Rights	p. 8
Time from Petition Filing to Disposition	pp. 9-10
Abuse/Neglect	p. 9
Termination of Parental Rights	p. 10
Time from Entry into Out-of-Home Care to Termination of Parental Rights Petition Filing	p. 11
Time from Entry into Out-of-Home Care to Child Freed	p. 12
Time to Initial Permanency Hearing and Between Subsequent Permanency Hearings	p. 13
Non-Freed Children	
Freed Children	
Subsequent Abuse/Neglect Filings after the Initial Period of Court Jurisdiction Ends	p. 14

Overview

Number of children **Under Court Jurisdiction** on the 1st day of the year

Number of children **Entering Court Jurisdiction** & **Exiting Court Jurisdiction** during the year

By calendar year, 2011-2022 | New York State



Note: Counts include only children entering, exiting, or under court jurisdiction for the first time (i.e., first petition) due to an abuse, neglect, or voluntary placement.

Time from Entry into Out-of-Home Care to Permanency

Percent of children achieving permanency in **6**, **12**, **24**, and **36** months from entering out-of-home care, by type of permanency

By entry year cohorts, 2018-2021 | New York State



Number of children in each cohort

2018	2019	2020	2021
8,961	8,442	6,629	6,722

Among children who enter out-of-home (OOH) care for the first time in a given period due to abuse, neglect, or voluntary placement, the time from entering OOH care to permanency. Permanency includes reunification, adoption, or permanent custody or guardianship with a fit and willing relative or suitable person.

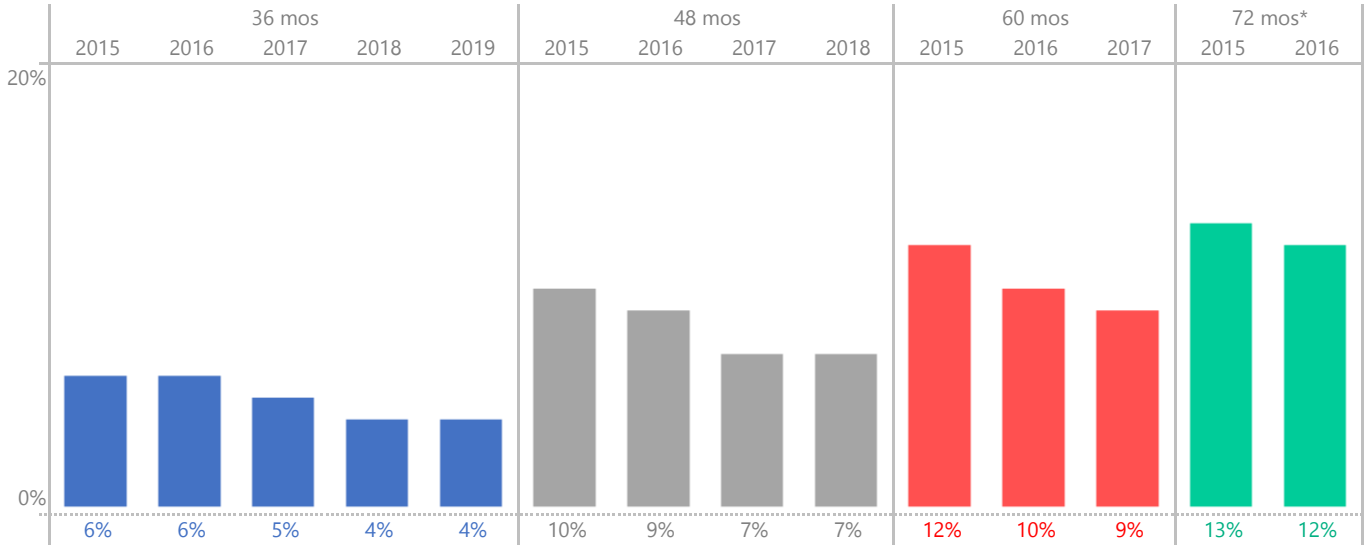
If a cohort is not shown for a given period of time, it is because not enough time has passed (as of this analysis) to observe all of the children in the cohort for that amount of time.

*Most adoptions occur several years after entering care. See p. 3 for more information.

Time from Entry into Out-of-Home Care to Adoption

Percent of children achieving permanency through adoption in **36**, **48**, **60**, and **72** months from entering out-of-home care, by type of permanency

By entry year cohorts, 2015-2019 | New York State



Number of children in each cohort

2015	2016	2017	2018	2019
8,930	8,935	9,679	8,961	8,442

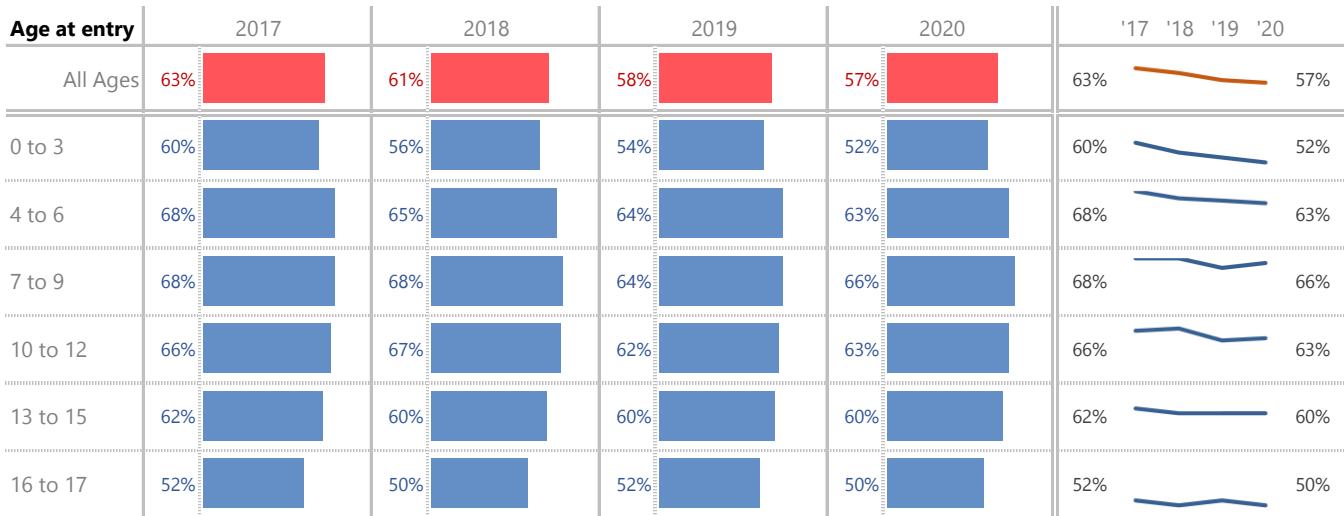
Among children who enter out-of-home (OOH) care for the first time in a given period due to abuse, neglect, or voluntary placement, the time from entering OOH care to adoption.

If a cohort is not shown for a given period of time, it is because not enough time has passed (as of this analysis) to observe all of the children in the cohort for that amount of time.

*After 72 mos (6 yrs) adoption rates start to level off.

Percent of Children Achieving Permanency at 24 months from Entering Out-of-Home care, by Age at Entry

By entry year cohorts, 2017-2020 | New York State



Reading the bar and line charts:

1. Look down a column to see how age groups differ within a given cohort year.
2. Look across a row, or look at the line chart, to see how a given age group has changed over time

Number of children in each cohort

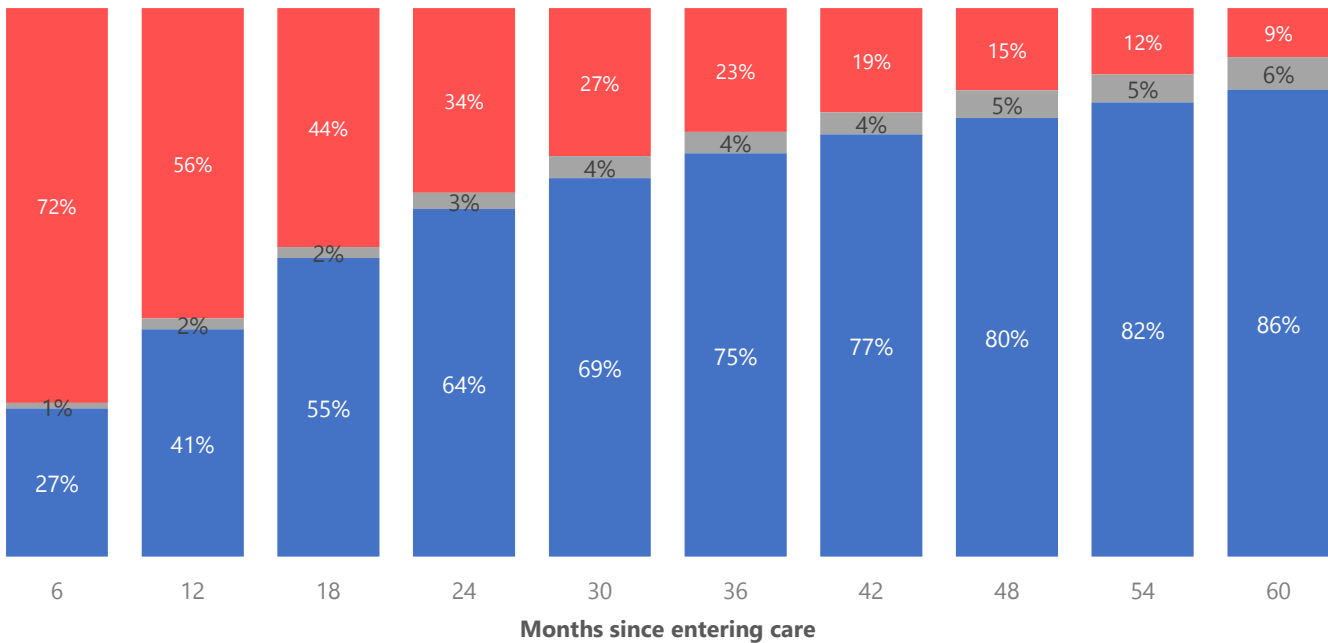
	2017	2018	2019	2020
All Ages	9679	8961	8442	6629
0 to 3	4080	3917	3653	3059
4 to 6	1533	1330	1282	976
7 to 9	1302	1177	1075	755
10 to 12	1065	1006	939	742
13 to 15	1102	1027	999	741
16 to 17	597	504	494	356

Time from Entry into Out-of-Home Care to Exit, by Exit Type

Percent of children still in care and exiting, by exit type, at 6 month intervals from date of entering out-of-home care

2017 Entry Cohort* | New York State

- Still in Out-Of-Home Care
- Aged Out & Other Exit**
- Reunification, Custody, Guardianship, and Adoption



*N = 9679. The cohort shown was chosen because enough time has passed to fully observe all children in that cohort for at least 60 months.

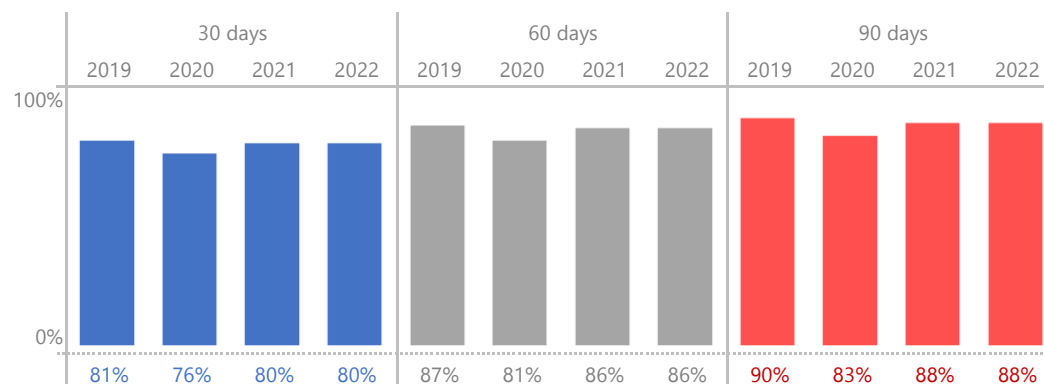
** "Other Exit" could include transfer to another agency, runaway, or death of child.

	Months since entering care									
	6	12	18	24	30	36	42	48	54	60
Still in Out-of-Home Care	72%	56%	44%	34%	27%	23%	19%	15%	12%	9%
Reunification	25%	36%	44%	49%	51%	53%	54%	55%	56%	57%
Custody	2%	5%	9%	11%	12%	13%	13%	13%	13%	14%
Adoption	0%	0%	1%	2%	3%	5%	6%	7%	8%	9%
Guardianship	0%	0%	1%	2%	3%	4%	4%	5%	5%	6%
Aged Out	0%	0%	0%	1%	1%	1%	1%	2%	2%	3%
Other Exit	1%	2%	2%	2%	3%	3%	3%	3%	3%	3%

Time from **Abuse/Neglect** Petition Filing to Issue Joined

Percent of children whose petition has reached issue joined within **30**, **60**, and **90** days from petition filing date

By entry year cohorts, 2019-2022 | New York State



Number of children in each cohort

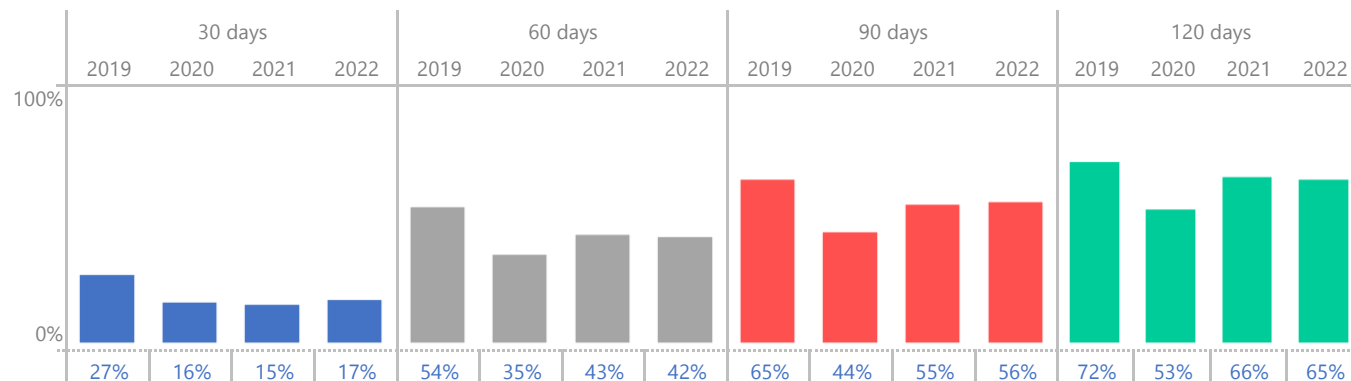
2019	2020	2021	2022
18,839	14,020	14,378	12,936

Among children for whom an original NA/NN petition is filed during a given period, the time from petition filing to issue is joined.

Time from **Termination of Parental Rights** (TPR) Petition Filing to Issue Joined

Percent of children whose petition has reached issue joined within **30**, **60**, **90**, and **120** days from petition filing date

By entry year cohorts, 2019-2022 | New York State



Number of children in each cohort

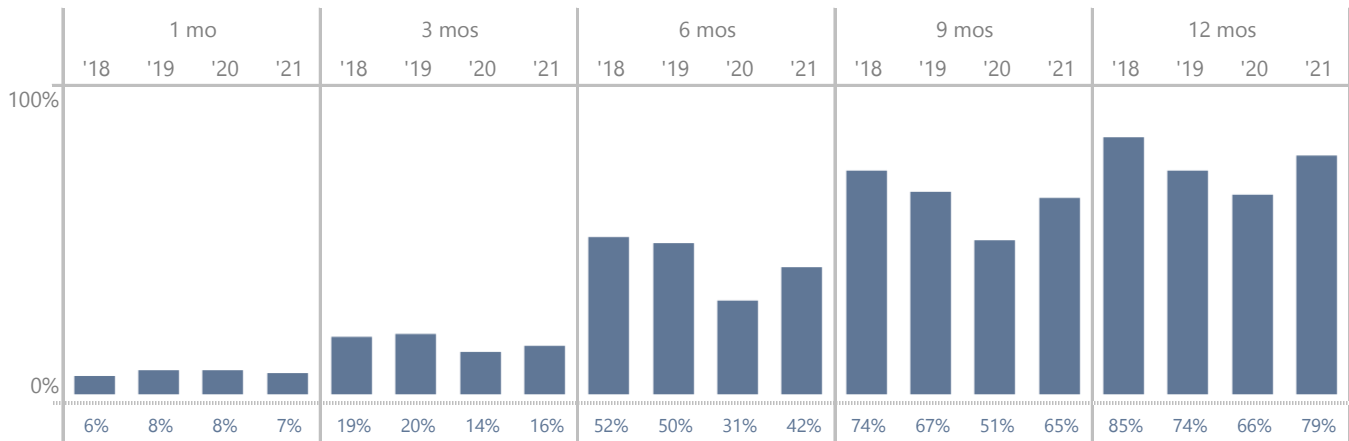
2019	2020	2021	2022
1,679	1,221	1,557	1,470

Among children for whom an initial TPR petition is filed during a given period, the time from petition filing to issue joined.

Time from Abuse/Neglect Petition Filing to Adjudication

Percent of children whose petition has been adjudicated, by months from filing to adjudication

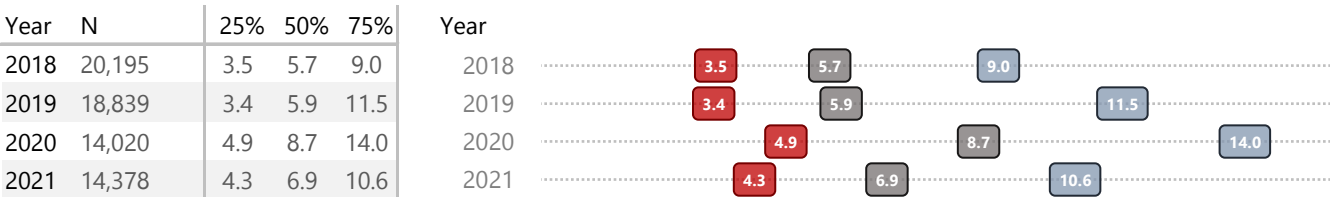
By entry year cohorts, 2018-2021 | New York State



Time from Filing to Adjudication, by Month

Year	N	Months												
		0	1	2	3	4	5	6	7	8	9	10	11	12
2018	20,195	1%	6%	12%	19%	30%	40%	52%	60%	68%	74%	78%	82%	100%
2019	18,839	1%	8%	12%	20%	30%	40%	50%	57%	63%	67%	70%	72%	74%
2020	14,020	2%	8%	11%	14%	19%	25%	31%	38%	44%	51%	56%	61%	66%
2021	14,378	1%	7%	11%	16%	22%	31%	42%	50%	58%	65%	71%	76%	79%

Number of months it takes for 25%, 50%, and 75% of Petitions to reach adjudication

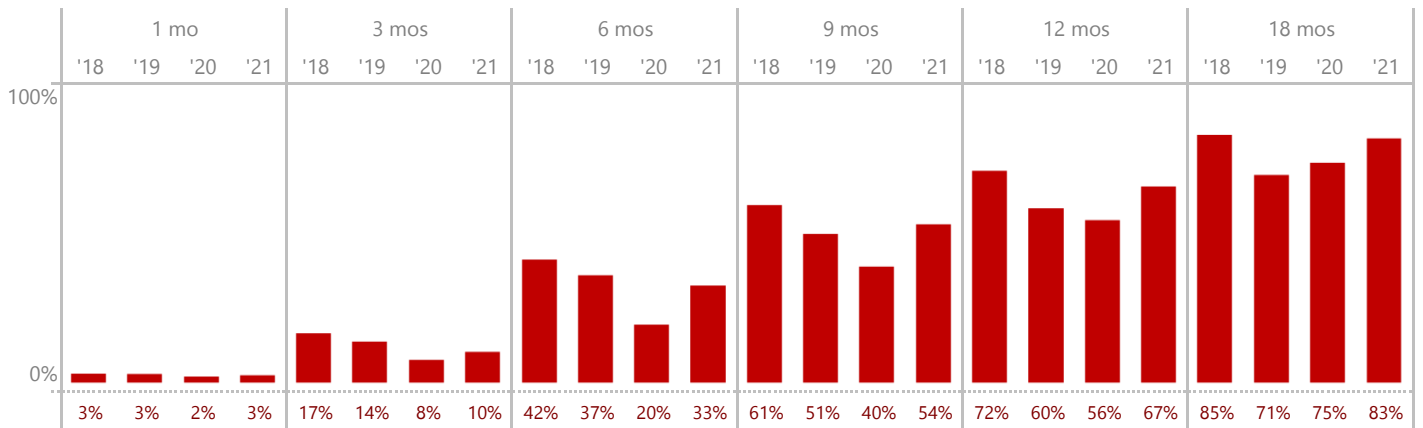


Among children for whom an original NA/NN petition is filed during a given period, the time from petition filing to adjudication

Time from Termination of Parental Rights (TPR) Petition Filing to Adjudication

Percent of children whose TPR petition has been adjudicated, by months from filing to adjudication

By TPR filing cohorts, 2018-2021 | New York State



Time from TPR Filing to Adjudication, by Month

Year	N	Months																		
		0	1	2	3	4	5	6	7	8	9	10	11	12	13	14	15	16	17	18
2018	1,892	0%	3%	9%	17%	27%	33%	42%	49%	55%	61%	65%	70%	72%	75%	78%	81%	83%	84%	85%
2019	1,679	0%	3%	7%	14%	23%	30%	37%	42%	46%	51%	54%	57%	60%	62%	64%	66%	68%	69%	71%
2020	1,221	0%	2%	5%	8%	11%	16%	20%	26%	34%	40%	45%	50%	56%	60%	64%	66%	69%	72%	75%
2021	1,557	0%	3%	5%	10%	18%	25%	33%	40%	48%	54%	59%	63%	67%	71%	75%	78%	80%	82%	83%

Number of months it takes for 25%, 50%, and 75% of TPR Petitions to reach adjudication

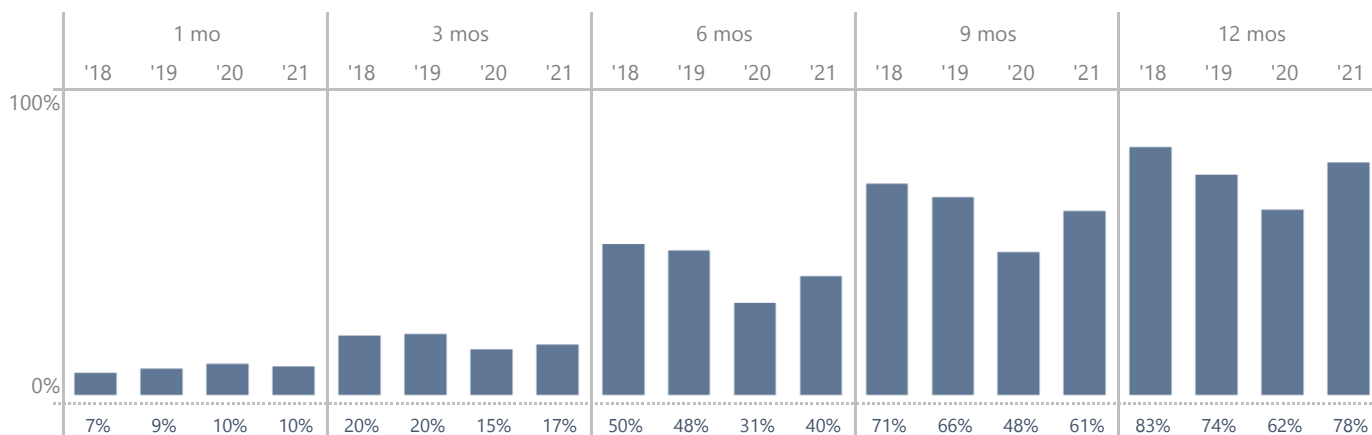


Among children for whom an original TPR petition is filed during a given period, the time from petition filing to adjudication

Time from Abuse/Neglect Petition Filing to Disposition*

Percent of children whose petition has been disposed, by months from filing to disposition

By entry year cohorts, 2018-2021 | New York State



Time from Filing to Adjudication, by Month

Year	N	Months												
		0	1	2	3	4	5	6	7	8	9	10	11	12
2018	11,648	1%	7%	13%	20%	30%	39%	50%	58%	65%	71%	75%	79%	83%
2019	10,791	2%	9%	13%	20%	30%	39%	48%	55%	61%	66%	69%	71%	74%
2020	8,114	3%	10%	13%	15%	19%	25%	31%	36%	42%	48%	53%	57%	62%
2021	8,696	2%	10%	12%	17%	23%	31%	40%	48%	55%	61%	68%	73%	78%

Number of months it takes for 25%, 50%, and 75% of Petitions to reach adjudication



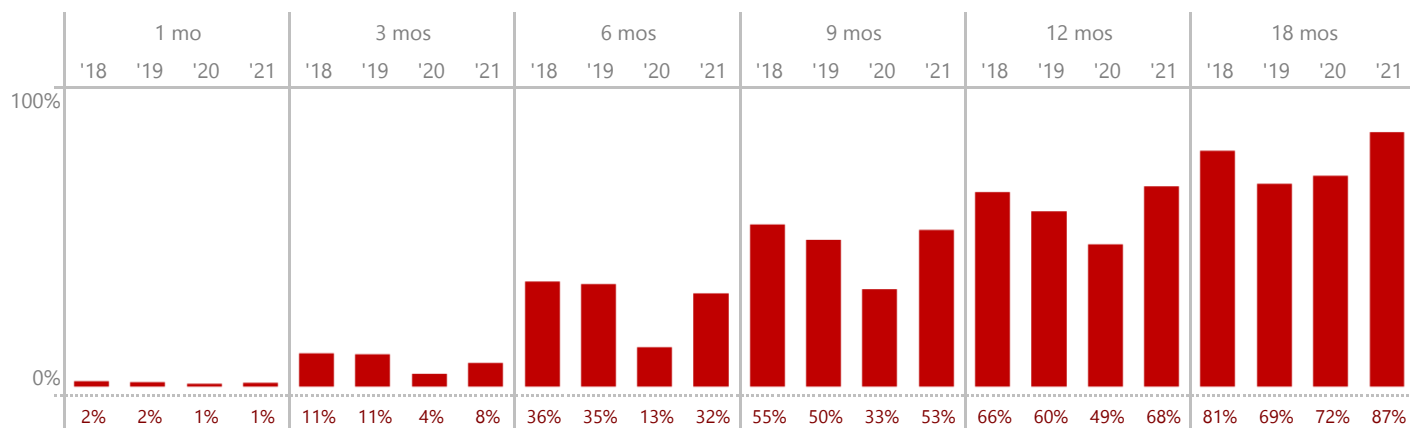
Among children for whom an original NA/NN petition is filed during a given period, the time from petition filing to disposition

***Note:** The population for time to TPR Disposition is determined by the prior metric, time to TPR Adjudication. As more cases get adjudicated, the population for time to disposition will increase. This changes the numbers, percents and quartile values in this time to disposition metric. This primarily impacts the more recent entry cohort years.

Time from Termination of Parental Rights (TPR) Petition Filing to Disposition*

Percent of children whose TPR petition has been disposed, by months from filing to disposition

By TPR filing cohorts, 2018-2021 | New York State



Time from TPR Filing to Disposition, by Month

Year	N	Months																		
		0	1	2	3	4	5	6	7	8	9	10	11	12	13	14	15	16	17	18
2018	1,136	0%	2%	4%	11%	22%	28%	36%	43%	49%	55%	59%	64%	66%	69%	73%	76%	78%	79%	81%
2019	941	0%	2%	4%	11%	22%	28%	35%	40%	45%	50%	55%	57%	60%	61%	63%	64%	66%	67%	69%
2020	611	0%	1%	2%	4%	7%	9%	13%	18%	26%	33%	40%	43%	49%	53%	59%	62%	67%	69%	72%
2021	886	0%	1%	3%	8%	16%	22%	32%	39%	47%	53%	59%	64%	68%	72%	77%	81%	83%	85%	87%

Number of months it takes for 25%, 50%, and 75% of TPR Petitions to reach Disposition



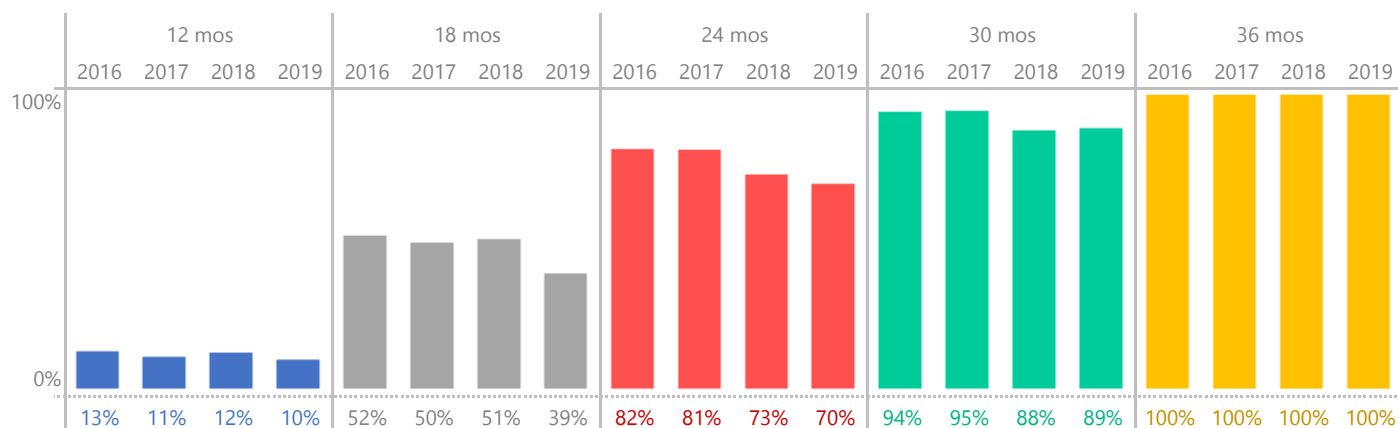
Among children for whom an original TPR petition is filed during a given period with a finding, the time from petition filing to disposition.

***Note:** The population for time to TPR Disposition is determined by the prior metric, time to TPR Adjudication. As more cases get adjudicated, the population for time to disposition will increase. This changes the numbers, percents and quartile values in this time to disposition metric. This primarily impacts the more recent entry cohort years.

Time from Entry into Out-of-Home Care to Filing a Petition for Termination of Parental Rights (TPR)

Among all children for whom a TPR petition is filed within 36 months of entering out-of-home care, percent of children with a TPR petition filed, by time to filing

By entry year cohorts, 2016-2019 | New York State



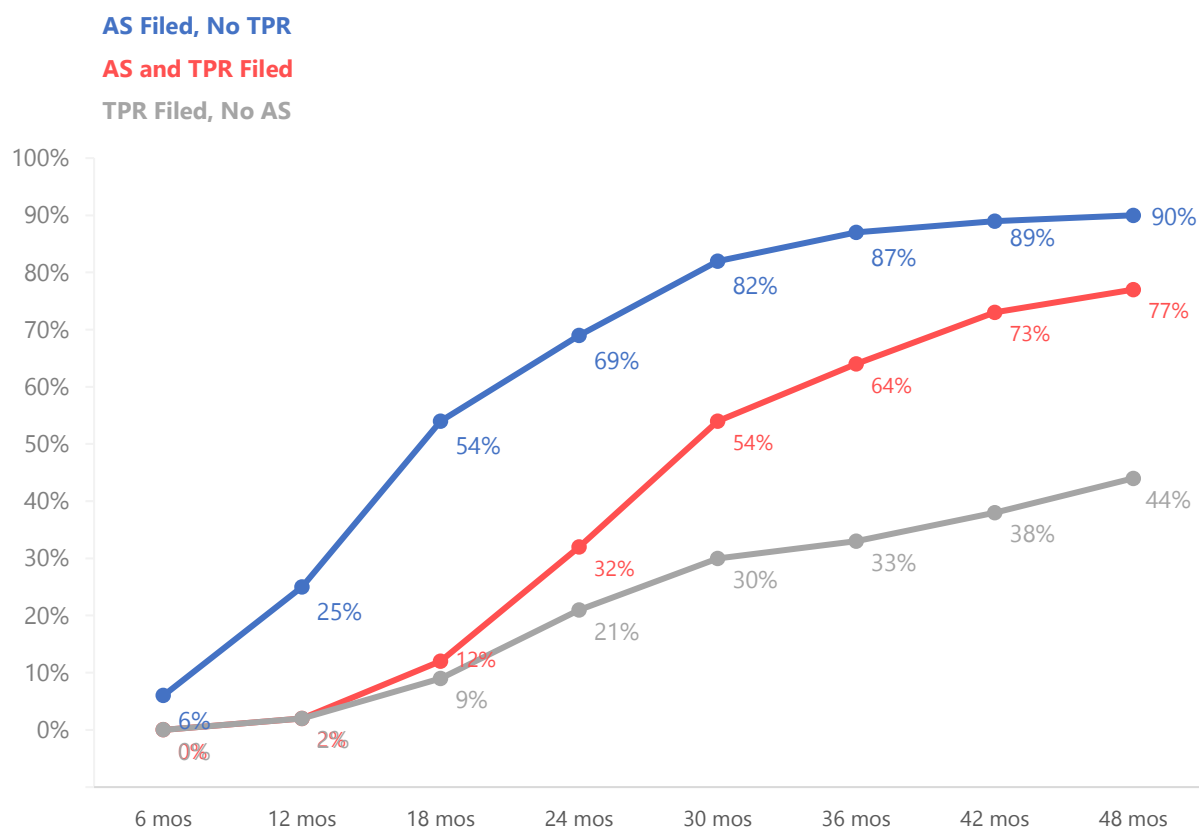
Year	N	12 mos	18 mos	24 mos	30 mos	36 mos
2016	1,393	13%	52%	82%	94%	100%
2017	1,340	11%	50%	81%	95%	100%
2018	1,157	12%	51%	73%	88%	100%
2019	1,153	10%	39%	70%	89%	100%

Time from Entry into Out-of-Home Care to Child Freed

Percent of children freed* after entering OOH care, by months since entering care and type of filing

(limited to children for whom an initial TPR and/or AS petition is filed within 36 months of entering)

2017 Entry Cohort | New York State



Filing Type	N	6 mos	12 mos	18 mos	24 mos	30 mos	36 mos	42 mos	48 mos
AS Filed, No TPR	159	6%	25%	54%	69%	82%	87%	89%	90%
AS and TPR Filed	506	0%	2%	12%	32%	54%	64%	73%	77%
TPR Filed, No AS	842	0%	2%	9%	21%	30%	33%	38%	44%

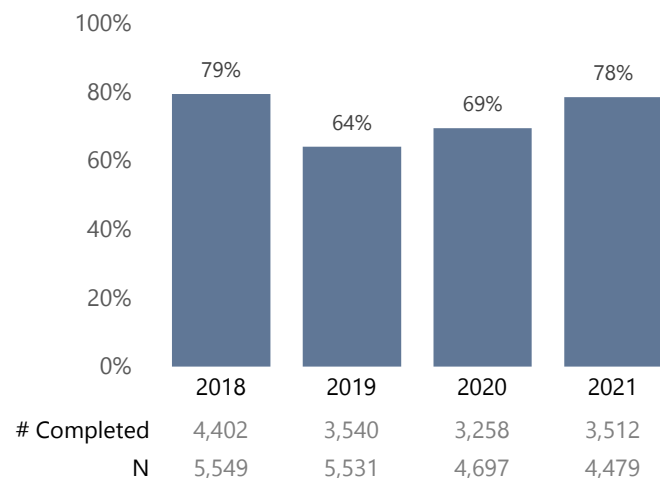
Among children who entered OOH care for the first time due to abuse, neglect, or voluntary placement and for whom an initial TPR and/or AS petition is filed within 36 months of entering, the time from entry to child freed.

*A child is considered "freed" when he/she has had at least one disposition of a certain type on an AS and TPR docket and an outcome in UCMS indicates the child is freed. The freed date is the date of the last disposition on the AS or TPR docket

Among children who enter out-of home (OOH) care for the first time in a given period due to abuse/neglect or voluntary placement...

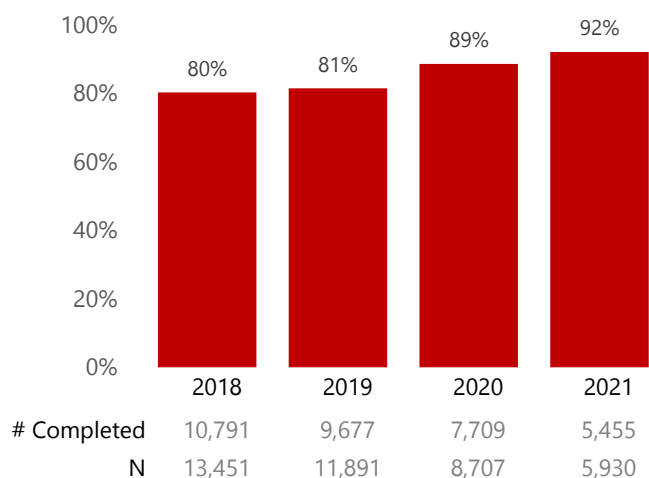
...% of initial permanency hearings completed within **9** months from entering OOH care

By entry year cohorts 2018-2021 | New York State



...% of permanency hearings completed within **7** months from the previous completed permanency hearing

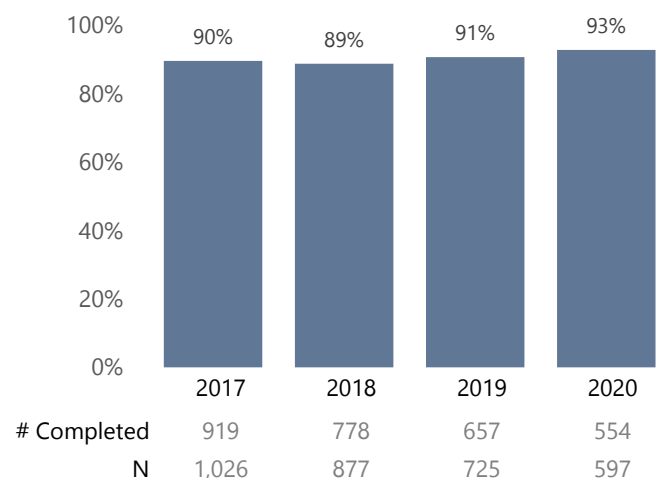
By entry year cohorts 2018-2021 | New York State



Among children who enter out-of home (OOH) care for the first time in a given period due to abuse/neglect or voluntary placement **and are subsequently freed...**

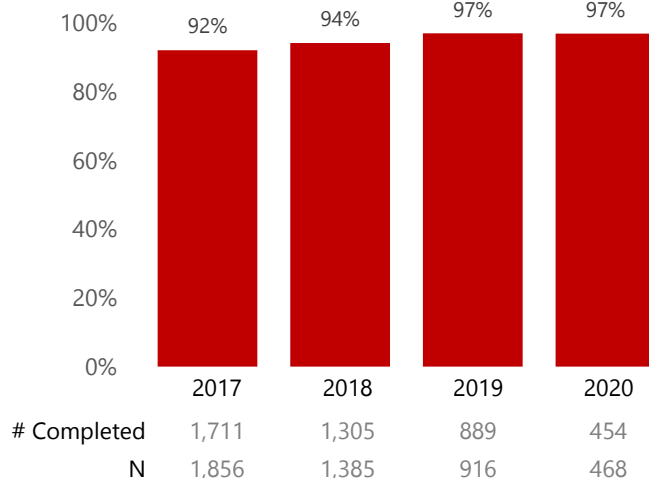
...% of initial permanency hearings completed within **60** days from the child freed date

By entry year cohorts 2017-2020 | New York State



...% of permanency hearings completed within **7** months from the previous completed permanency hearing

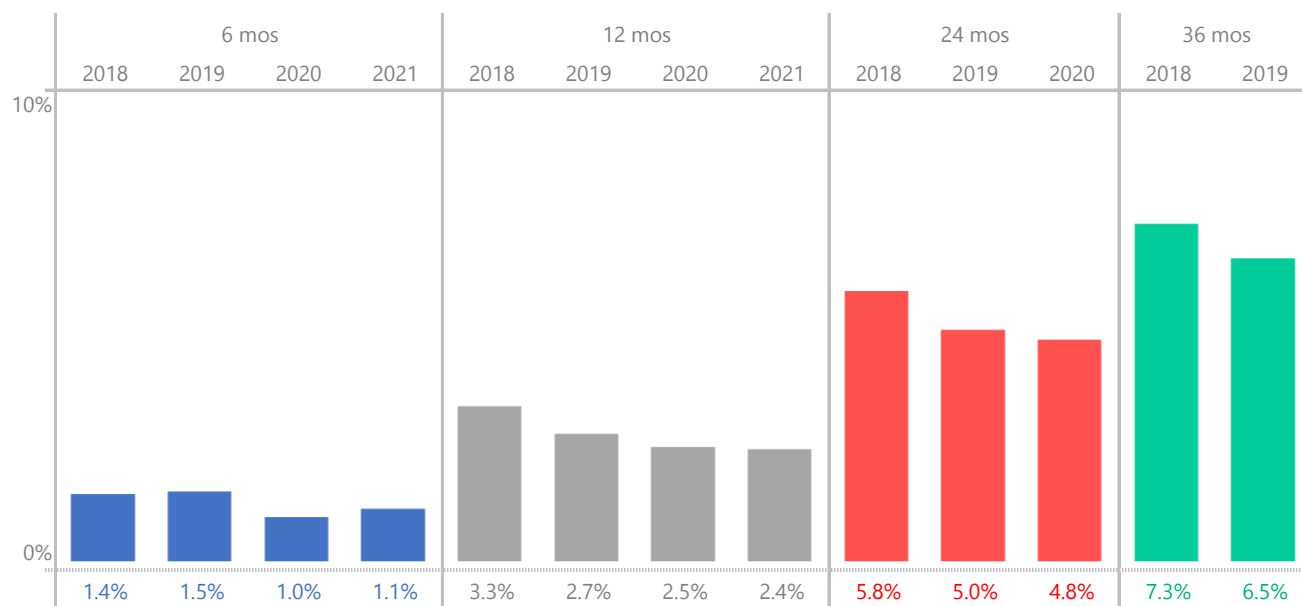
By entry year cohorts 2017-2020 | New York State



Time from End of Court Jurisdiction to Subsequent Abuse/Neglect Filing

Percent of children with an abuse/neglect petition filed in **6**, **12**, **24**, and **36** months after court jurisdiction ends

By exit year cohorts, 2018-2021 | New York State



Number of children in each cohort

2018	2019	2020	2021
21,005	21,846	14,677	16,332

Among children whose period of court jurisdiction ends, the percent of children who are the subject of a subsequent petition alleging abuse/neglect filed within a given period of time.

If a cohort is not shown for a given period of time, it is because not enough time has passed (as of this analysis) to observe all of the children in the cohort for that amount of time.